



Secura  
luxury vinyl sheet flooring

Welcome home





Cover image: White Limed Ash; this image: Powdered Concrete

# Secura

luxury vinyl sheet flooring

## Inspiring interiors for modern living


Make your house a home with the authentic designs and welcoming comfort of Secura. Combining influences from natural textures like wood and stone through to contemporary modern living materials, the Secura collection has been developed to enhance your home's interior using authentic patterns and inspiring designs, whilst giving you the practicality and durability that comes from luxury vinyl sheet flooring.

The Secura collection has been designed to be used in every room in your house. Innovative maintenance technology, together with an eclectic array of traditional and contemporary designs gives you a finish that you can be proud of, and will enjoy for years to come.



All of the designs in the Secura collection are guaranteed to stay looking incredible for up to 20 years.

For a closer look visit our website or call us:

Polyflor at home   
www.polyflorathome.com

FREE   
Sample Service  
+44 (0) 161 767 2551







Portobello Flagstone

## Designed for Living

Achieving a high design finish in your home's interior can sometimes mean compromising on other features including durability, comfort, and an easy maintenance regime. The results can be timely and costly, something a modern household cannot afford.

That is why the Secura collection has been developed to withstand the demands of a busy household, whilst bringing you inspiring designs and authentic finishes.



  
UltraComfort™  
Soft Underfoot

The addition of a soft-backed layer provides warmth and comfort underfoot, plus aids in reducing noise between rooms



  
SureTread™  
R10 Slip Resistance

Secura's hard wearing R10 level slip resistance helps to prevent slips in the home, keeping you and your family safe



  
CleanShield™  
Easy Clean Surface

The unique polyurethane reinforcement (PUR) in Secura provides a surface that helps to prevent stains and scuff marks, reducing cleaning time and costs





# Wood

Accurately reflecting the natural beauty of wood, the Secura collection includes a balanced range of warm and cool planks in traditional and contemporary designs. Every shade in the range is enhanced with a realistic texture to give your luxury vinyl floor a truly authentic finish.





White Limed Ash 2160  
1500 x 166mm



Clean and crisp with authentic grain detail, White Limed Ash will breathe new life into any interior.





Coastal Oak 2159  
1500 x 200mm



  
SureTread™  
R10 Slip Resistance

Inspired by sandy shores and leafy coastlines bring the natural charm of the seaside to your home. Pair with cool blue accessories to create a contemporary but timeless look.







**Sterling Oak** 2161  
1000 x 200mm



Wood

  
**CleanShield™**  
Easy Clean Surface

The stunning grey hues of Sterling Oak make a great accompaniment to any interior scheme. Pair with contrasting accessories for a statement industrial finish.





**Blond Oak** 2127  
1500 x 200mm



The striking plank size and detailed grain patterns within the Blond Oak design help to create a stylish, sophisticated floorcovering that is truly eye-catching.





**Golden Oak** 2128  
500/1000 x 62.5mm



Encapsulating a variety of deep warm honey tones within a slim plank design, Golden Oak reflects the same grain and tonal variations found in real oak flooring.







Wheatfield Oak 2163  
1500 x 167mm



Embodying harvest wheat and golden grains, Wheatfield Oak will give your home a warm country welcome.





Natural Oak 2126  
1000 x 200mm



Wood



The untreated decoration of Natural Oak brings out the authentic character of the wood, complemented by pale honey tones to create a sense of warmth and depth.





Honey Blushed Oak 2162  
1500 x 200mm



Rich autumnal highlights bring this stunning timber design to life. Inject some character into your home with Honey Blushed Oak.





Country Oak 2130  
1500 x 200mm



The heavy rustic wood pattern and rich cinnamon and caramel tones of Country Oak brings the character of this classic wood to life.







Antique Herringbone 2129  
710 x 140mm



The light tan hues and hazelnut tones give Antique Herringbone a rustic feel, and the rougher grain and knots have been faithfully reproduced.







**Black Walnut** 2133  
420/580 x 100mm



Wood

The dark, velvety coffee tones and accentuated grain of Black Walnut, gives this design a distinct quality and character suited to high-contrast modern interiors.





**Ebony** 2135  
1000 x 100/150mm



With echoes of charcoal grey hues, this contemporary Ebony wood design when contrasted with more neutral furnishings and wall colours, brings any modern living space right up-to-date.







# Stone/Abstract

Featuring beautifully rich stones and modern building materials, the Secura collection includes an exciting array of contemporary floorcoverings. Developed to complement a wide variety of styles from urban living spaces to classic family kitchens there is a floor to enhance every room in your home.





Limestone 2111  
500 x 333mm



Seeking inspiration from natural rock and stone formations, the classic Limestone styling of this contemporary floorcovering provides the perfect base for any modern household.







Riviera Taupe 2116



The hard-wearing R10 slip resistance level helps to prevent slips in the home and keep you and your family safe.

The light auburn and beige layered tones of Riviera Taupe come together to create an elegant pattern. This attractive textured design creates a complex and elegant floorcovering that is both stylish and fresh.





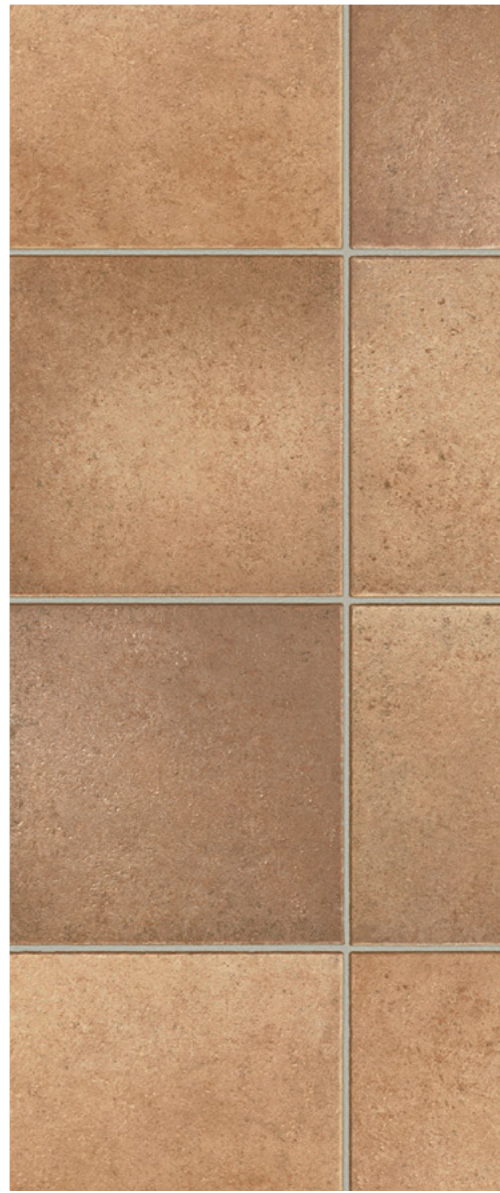
Yorkstone 2110  
500 x 333mm



Bringing together realistic stone hues and natural rock formation patterns, Yorkstone provides a practical yet striking floorcovering suited to both clean and contemporary setting as well as classically styled interiors.







Farmhouse Terracotta 2113  
165 x 165mm



Stone/Abstract

This traditional small tile pattern contains a variety of warming umber and orange tones that come together with all of the natural beauty of terracotta.



The soft, earthy tones of Portabello Flagstone will harmonise all interior schemes. Subtle and calming, create a balanced space.



Portabello Flagstone 2166  
400 x 375mm







Powdered Concrete 2164



Quickly becoming a firm home interior favourite, concrete is here to stay. With an effortlessly chic finish this gorgeous design will freshen up any room in your home.







Plymouth Slate 2165  
500 x 333mm



UltraComfort™  
Soft Underfoot



Stone/Abstract

Neutral but lively this stunning fresh water slate design will pair beautifully with both minimalist and vibrant decors.





Polished Concrete 2118



Stone/Abstract

Polished Concrete is a contemporary floorcovering designed to evoke a fashionable loft-apartment style in an easy-to-fit, practical format.







Grey Flagstone 2119  
400 x 375mm



A modern flooring design that is growing in popularity, Grey Flagstone recreates the dramatic effect of concrete in a large square set tile.







Black Slate 2114  
500 x 333mm



Stone/Abstract

  
CleanShield™  
Easy Clean Surface

The stylish and attractive brickwork design of Black Slate, together with its crisp black and grey tones and pale grout lines gives any interior a modern yet elegant finish.



Wood

Stone/Abstract



**2160** White Limed Ash  
1500 x 166mm R10



**2159** Coastal Oak  
1500 x 200mm R10



**2161** Sterling Oak  
1000 x 200mm R10



**2111** Limestone ▲  
500 x 333mm R10



**2116** Riviera Taupe R10



**2110** Yorkstone ▲  
500 x 333mm R10



**2127** Blond Oak  
1500 x 200mm R10



**2128** Golden Oak  
500/1000 x 62.5mm R10



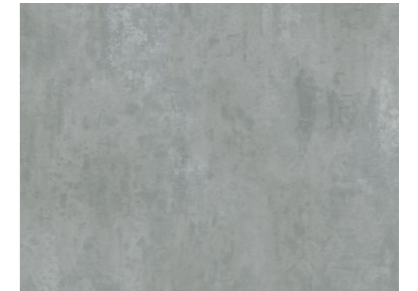
**2163** Wheatfield Oak  
1500 x 167mm R10



**2113** Farmhouse Terracotta + R10



**2166** Portobello Flagstone + R10



**2164** Powdered Concrete R10



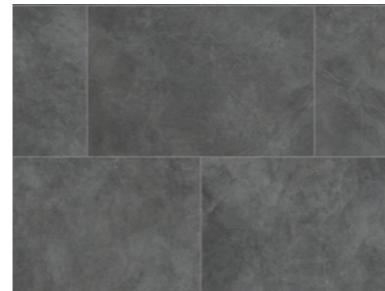
**2126** Natural Oak  
1000 x 200mm R10



**2162** Honey Blushed Oak  
1500 x 200mm R10



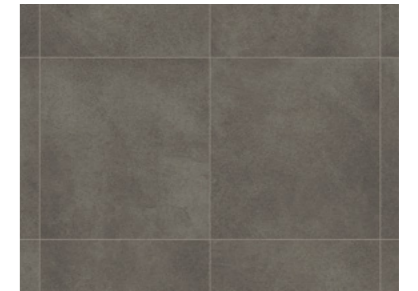
**2130** Country Oak  
1500 x 200mm R10



**2165** Plymouth Slate ▲  
500 x 333mm R10



**2118** Polished Concrete R10



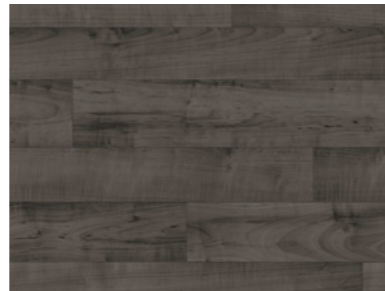
**2119** Grey Flagstone + R10



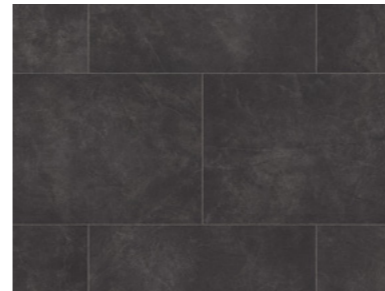
**2129** Antique Herringbone  
710 x 140mm R10



**2133** Black Walnut  
420/580 x 100mm R10



**2135** Ebony  
1000 x 100/150mm R10



**2114** Black Slate ▲  
500 x 333mm R10

FREE Sample Service

We recommend you view an original sample of your selected designs which we shall be pleased to supply, free of charge. Either visit [polyflorathome.com](http://polyflorathome.com) and follow the samples link or call the dedicated Polyflor Samples Hotline on +44 (0)161 767 2551.

2/3/4  
metre widths

Orientation: + Square ▲ Brickbond

The R values shown denote a ramp test result, which is an ex-factory measure of slip resistance. For safety flooring with sustainable wet slip resistance, refer to the Polysafe ranges.

2/3/4  
metre widths





  
**CleanShield™**  
 Easy Clean Surface

this image: Powdered Concrete

## Floorcare

So you can continue to enjoy your Secura floorcovering for years to come, a regular cleaning regime is required to help keep it looking as new. Regular cleaning is more beneficial to the floorcovering and more cost effective than occasional heavy cleaning.

### Ensure that you regularly:



- ✓ Sweep or vacuum your floor to remove any dust and loose dirt

- ✓ Mop with a neutral cleanser to remove any stubborn marks, rinse with clean water and allow to dry



### Protection for everyday wear:

- ✓ Install mats at all entrances to pick up excess dirt and grit which might scratch the floor

- ✓ Ensure all cleaners and detergents are diluted as per the manufacturer's instructions. For recommended products for use with Secura, visit [www.polyflor.com](http://www.polyflor.com) and go to the product pages




- ✓ Fit protective pads to all furniture legs to prevent scratches when moved across the floor



The Secura collection comes complete with a polyurethane reinforcement (PUR) to protect against everyday wear



# Technical

Gauge	EN 428/ISO 24346	3.0mm
Wear Layer	EN 429/ISO 24340	0.35mm
Roll Size	EN 426/ISO 24341	4m x 25m = 100m <sup>2</sup> 3m x 25m = 75m <sup>2</sup> 2m x 25m = 50m <sup>2</sup>
Total Weight	EN 430/ISO 23997	1780g/m <sup>2</sup>
General Performance	EN 653 EN ISO 26986	Conforms Conforms
Use Area	EN 685/ISO 10874	
Acoustic Impact Sound Reduction	EN ISO 140-8 EN ISO 10140-3	≥19dB ≥19dB
Resistance to Chemicals	EN 423 ISO 26987	Excellent chemical resistance
Reaction to Fire	EN 13501-1	Class Bfl-S1
Abrasion Resistance	EN 653	Group T
Slip Resistance*	EN 13893 AS 4586 DIN 51130	Class DS (dry condition) R10 R10
Indentation Residual	EN 433/ISO 24343-1	<0.2mm
Dimensional Stability	EN 434/EN ISO 23999	<0.40%
Flexibility	EN 435/EN ISO 24344	(Method A) / Pass 20mm Ø
Thermal Resistance	ISO 8302	Suitable for underfloor heating 0.0525m <sup>2</sup> K/W 0.525 Tog
Electrical behaviour (body voltage)	EN 1815	≤2kV Classified as 'antistatic'
Light Fastness	ISO 105-B02	(Method 3) ≥6
Castor Chair (continuous use)	ISO 4918	Pass. Suitable for castor chairs.
Furniture Leg	EN 424	Pass. Type 2 foot
VOC Emissions	Indoor Air Comfort GOLD FloorScore	Eurofins certified product Certified Product
Responsible Sourcing	BES 6001	Very Good

Environmentally Preferable Flooring - Polyflor Secura achieves BRE Global A rating (Generic) in the Green Guide to Specification in uses areas such as education and healthcare. It is 100% recyclable. Visit [www.polyflor.com/sustainability](http://www.polyflor.com/sustainability).

PUR - Polyflor Secura features a high quality, cross-linked polyurethane reinforcement, UV cured to provide a low-cost, polish free maintenance regime for the lifetime of the flooring.

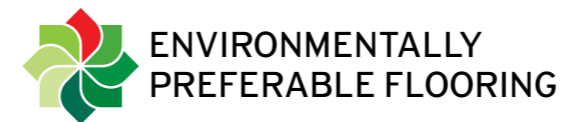
Hygiene - All Polyflor commercial sheet vinyl ranges provide a continuous, impervious and hygienic flooring solution which can be confidently cleaned in accordance with recommended maintenance procedures and approved maintenance products. The implementation of an effective cleaning regime is the most important defence against infection.

For information regarding handling and installation, adhesives, maintenance, applications, chemical resistance and product warranty, consult Polyflor Customer Technical Services on +44 (0)161 767 1912, or email [tech@polyflor.com](mailto:tech@polyflor.com).

\*For safety flooring with sustainable wet slip resistance, refer to Polysafe ranges.

The data presented is correct at the time of printing. For latest information, please visit our website [polyflor.com](http://polyflor.com).

Decoration and shade may vary slightly from the samples shown.



**Sustainability:** Polyflor have demonstrated a high level of commitment over the years to producing high quality floorcoverings, whilst minimising our impact on the environment without compromising the performance benefits of our products.

There can be few materials better suited to recycling than vinyl flooring. Secura is 100% recyclable, and can be recycled without losing any of its performance properties. Polyflor continually works on developing new products and technologies, and constantly evaluates production methods to further minimise our impact on the environment.



VOC EMISSIONS:  
Indoor Air Comfort GOLD - Approved Eurofins certified  
FloorScore - Certified product



Refer to BRE Global ratings on [www.greenbooklive.com](http://www.greenbooklive.com)

For further details on Polyflor's achievements in areas such as recycling, energy reduction and waste avoidance log onto [www.polyflor.com/sustainability](http://www.polyflor.com/sustainability)



## Guarantee

The Secura collection of luxury vinyl sheet flooring has been developed to meet the highest technical specification of its type. Ideal for all areas of the home, the products ensure high performance and optimum style. In addition, Secura is suitable for moderate commercial applications such as light traffic areas within hotels, conference rooms and small offices. Compared with many natural flooring options, Secura will under normal conditions resist household stains, will not crack, chip or splinter. The manufacturers of Secura are confident that their high quality products will provide many years of valuable service. All products purchased from the range are guaranteed for 20 years in domestic home installations against normal wear and tear in the recommended environment, provided that they have been fitted correctly and maintained in accordance with the manufacturer's instructions. In order to make a claim, customers must apply in writing indicating where the flooring was purchased and provide satisfactory proof of purchase. This guarantee only applies in the event of visible wearing out of the decorative pattern on the surface within 20 years of purchase, providing the flooring has been subject to normal usage in the recommended environment. It does not cover general misuse. Full terms and conditions of the guarantee are available on request from your flooring wholesaler or Polyflor Ltd.



# Secura

luxury vinyl sheet flooring

## Online Support


View even more Secura interiors along with other inspiring Polyflor flooring ranges for the home on our dedicated website [www.polyflorathome.com](http://www.polyflorathome.com), where you can browse save and download your favourite images, as well as order samples on the go!

Commercial customers can also visit [www.polyflor.com](http://www.polyflor.com) for detailed product and technical information on all collections within the Polyflor portfolio.

## Order Samples

To request free individual product samples of any design within the Secura collection, visit [www.polyflor.com](http://www.polyflor.com) and follow the link to Samples and Literature. Alternatively, call the dedicated Polyflor Samples Hotline on +44 (0) 161 767 2551.

For a closer look visit our website or call us:

Polyflor at home   
[www.polyflorathome.com](http://www.polyflorathome.com)

FREE   
Sample Service  
+44 (0) 161 767 2551



This image: White Limed Ash; back cover: Honey Blushed Oak



# Secura

luxury vinyl sheet flooring

## POLYFLOR™ INTERNATIONAL

### Australia

Polyflor Australia  
Tel: +61 3 9215 4400  
Tel: 1800 777 425  
E-mail: sales@polyflor.com.au

### Canada

Polyflor Canada Inc.  
Tel: +1 905 364 3000  
E-mail: sales@polyflor.ca

### China

Polyflor Hong Kong  
Tel: +(852) 2865 0101  
E-mail: info@polyflor.com.hk

### France

James Halstead France SAS  
Tel: +33 (0) 8 20 20 32 11  
E-mail: info@jhfrance.fr

### Germany

objectflor Art und Design Belags GmbH  
Tel: +49 (0) 2236 966 330  
E-mail: info@objectflor.de

### India

Polyflor India Pvt Ltd  
Tel: +91 22 4023 2485  
E-mail: info@polyflor.co.in

### Ireland

Polyflor Ireland  
Tel: +353 (1) 864 9304  
E-mail: salesireland@polyflor.com

### New Zealand

Polyflor New Zealand  
Tel: +64 9 269 1111  
Tel: 0800 765 935  
E-mail: sales@polyflor.co.nz

### Norway

Polyflor Nordic  
Tel: +47 23 00 84 00  
E-mail: firmapost@polyflor.no

### Poland

Polflor Sp. z o.o.  
Tel: +48 (0) 61 820 3155  
E-mail: polyflor@polflor.com.pl

### Russia

Polyflor Contract Ltd  
Tel: +7 (812) 332 42 02  
E-mail: info@polyflor.ru

### South Africa

Poly Sales Africa (Pty.) Ltd  
Tel: +27 11 609 3500  
E-mail: info@polyflor.co.za

### Sweden

FalckDesign AB  
Tel: +46 (0) 300 15820  
E-mail: info@falckdesign.com

[www.polyflorathome.com](http://www.polyflorathome.com)

[www.polyflor.com](http://www.polyflor.com)



## POLYFLOR™ HEAD OFFICE

POLYFLOR LTD. PO BOX 3 RADCLIFFE NEW ROAD WHITEFIELD MANCHESTER M45 7NR UK

UK SALES DIRECT: +44 (0)161 767 1122

UK SAMPLE REQUESTS: +44 (0)161 767 2551

EXPORT SALES DIRECT: +44 (0)161 767 1913

UK FAX: +44 (0)161 767 1128

EXPORT FAX: +44 (0)161 767 1166

TECHNICAL SUPPORT: +44 (0)161 767 1912

RECEPTION: +44 (0)161 767 1111

E-MAIL: PAHTEAM@POLYFLOR.COM

WEBSITE: WWW.POLYFLOR.COM

**POLYFLOR™**  
COVERING THE WORLD

*James Halstead™*  
FLOORING

LIT328 02/17